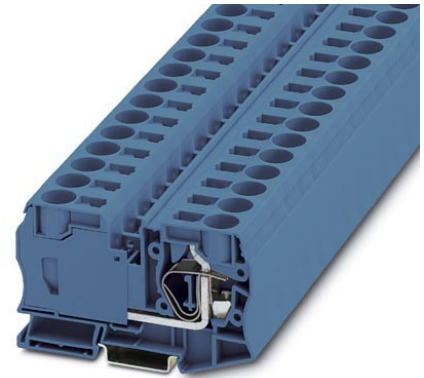


ST 35 BU

Order No.: 3036181

<http://eshop.phoenixcontact.de/phoenix/treeViewClick.do?UID=3036181>Feed-through terminal blocks with spring-cage connection, cross
section: 2.5 - 35 mm², width: 16 mm, color: blue

Commercial data	
EAN	4017918821050
Pack	10 Pcs.
Customs tariff	85369010
Weight/Piece	0.08733 KG
Catalog page information	Page 59 (CL-2007)

Product notes

WEEE/RoHS-compliant since:
01/01/2003

<http://www.download.phoenixcontact.com>
Please note that the data given here has been taken from the online catalog. For comprehensive information and data, please refer to the user documentation. The General Terms and Conditions of Use apply to Internet downloads.

Technical data**General**

Number of levels	1
Number of connections	2
Color	blue
Insulating material	PA
Inflammability class acc. to UL 94	V0

Dimensions

Width	16 mm
Length	100 mm
Height NS 35/7,5	59 mm
Height NS 35/15	66.5 mm

Technical data

Maximum load current	125 A (with 35 mm ² conductor cross section)
Rated surge voltage	8 kV
Pollution degree	3
Surge voltage category	III
Insulating material group	I
Connection in acc. with standard	IEC 60947-7-1
Nominal current I _N	125 A
Nominal voltage U _N	800 V
Open side panel	nein

Connection data

Conductor cross section solid min.	2.5 mm ²
Conductor cross section solid max.	35 mm ²
Conductor cross section stranded min.	2.5 mm ²
Conductor cross section stranded max.	35 mm ²
Conductor cross section AWG/kcmil min.	14
Conductor cross section AWG/kcmil max	2
Conductor cross section stranded, with ferrule without plastic sleeve min.	2.5 mm ²
Conductor cross section stranded, with ferrule without plastic sleeve max.	35 mm ²
Conductor cross section stranded, with ferrule with plastic sleeve min.	2.5 mm ²
Conductor cross section stranded, with ferrule with plastic sleeve max.	35 mm ²
2 conductors with same cross section, stranded, TWIN ferrules with plastic sleeve, min.	2.5 mm ²
2 conductors with same cross section, stranded, TWIN ferrules with plastic sleeve, max.	10 mm ²
Type of connection	Spring-cage connection
Stripping length	25 mm

Internal cylindrical gage	A8
---------------------------	----

Certificates / Approvals

Approval logo



CSA

Nominal voltage U_N	600 V
Nominal current I_N	115 A
AWG/kcmil	14-2

CUL

Nominal voltage U_N	600 V
Nominal current I_N	115 A
AWG/kcmil	14-2

UL

Nominal voltage U_N	600 V
Nominal current I_N	115 A
AWG/kcmil	14-2
Certification	BV, CB, CSA, CUL, GOST, LR, NK, UL, VDE-PZI

requested approbations

Certification Ex:	IECEX, KEMA-EX
-------------------	----------------

Accessories

Item	Designation	Description
Bridges		
3005963	FBS 2-16	Plug-in bridge for cross connections in the bridge shaft, 2-pos., color: Red
3030899	RB ST 35-(2,5/4)	Adapter bridge, for connecting ST-35 spring-cage terminal blocks with ST-2.5 or ST-4 spring-cage terminal blocks

Marking

1053001	ZB 10:UNBEDRUCKT	Zack strip, unprinted: 10-section, for individual labeling with M-PEN, ZB-T or CMS system, sufficient for 100 terminal blocks, for a terminal width of 10.2 mm, color: White
1053124	ZB10,LGS:1-9	Zack strip, printed horizontally: 9-section, with the numbers 1 - 9, color: white
1053014	ZB10,LGS:FORTL.ZAHLEN	Zack strip, 10-section, printed horizontally: with the numbers, 1-10, 11-20 etc. up to 991-1000, color: white
1053030	ZB10,LGS:GLEICHE ZAHLEN	Zack strip, 10-section, printed horizontally: with identical numbers, 1/1/1, 2/2/2 etc. up to 100/100/100, color: white
1053412	ZB10,LGS:L1-N,PE	Zack strip, printed horizontally, strips with 10 labels, L1, L2, L3, N, PE, L1, L2, L3, N, PE, color: white
1053438	ZB10,LGS:U-N	Zack marker strip, printed horizontally, strips with 10 labels, U, V, W, N, GND, U, V, W, N, GND, color: White
1053027	ZB10,QR:FORTL.ZAHLEN	Zack strip, 10-section, printed vertically: with consecutive numbers, 1-10, 11-20 a.s.o. up to 991-1000, color: white
1053043	ZB10,QR:GLEICHE ZAHLEN	Zack strip, 10-section, printed vertically: with identical numbers, 1/1/1, 2/2/2 etc. up to 100/100/100, color: white
5062535	ZB10/BU-100:UNBEDRUCKT	Zack strip, unprinted: 10-section, for individual labeling with M-PEN, ZB-T or CMS system, large batch, sufficient for labeling 1000 terminal blocks, color: blue
5062548	ZB10/GN-100:UNBEDRUCKT	Zack strip, unprinted: 10-section, for individual labeling with M-PEN, ZB-T or CMS system, large batch, sufficient for labeling 1000 terminal blocks, color: green
1053182	ZB10/OG-100:UNBEDRUCKT	Zack strip, unprinted: 10-section, for individual labeling with M-PEN, ZB-T or CMS system, large batch, sufficient for labeling 1000 terminal blocks, color: orange
5062551	ZB10/RD-100:UNBEDRUCKT	Zack strip, unprinted: 10-section, for individual labeling with M-PEN, ZB-T or CMS system, large batch, sufficient for labeling 1000 terminal blocks, color: red
0800226	ZB10/VT-100:UNBEDRUCKT	Zack strip, unprinted: 10-section, for individual labeling with M-PEN, ZB-T or CMS system, large batch, sufficient for labeling 1000 terminal blocks, color: violet
5060883	ZB10/WH-100:UNBEDRUCKT	Zack strip, unprinted: 10-section, for individual labeling with M-PEN, ZB-T or CMS system, large batch, sufficient for labeling 1000 terminal blocks, for a terminal width of 10.2 mm, color: White
5062564	ZB10/YE-100:UNBEDRUCKT	Zack strip, unprinted: 10-section, for individual labeling with M-PEN, ZB-T or CMS system, large batch, sufficient for labeling 1000 terminal blocks, color: yellow
1050525	ZB10:SO/CMS	Zack strip, 10-section, divisible, special printing, marking according to customer requirements
0800734	ZBFM 8/WH:UNBEDRUCKT	Zack marker sheet, flat, unprinted: 50-section, 10 strips à 5 markers, sufficient for 50 terminal blocks, for all terminal blocks, pitch 8.2 mm, labeling with M-PEN or CMS system, color: white
0804934	ZBFM 8:SO/CMS	Special printing, Zack marker sheet, flat, 50-section, divisible, marking according to customer requirements

Plug/Adapter

0201731	MPS-IH BK	Insulating sleeve (black), for MPS metal part to be ordered separately (0201744)
0201689	MPS-IH BU	Insulating sleeve (blue), for MPS metal part to be ordered separately (0201744)
0201702	MPS-IH GN	Insulating sleeve (green), for MPS metal part to be ordered separately (0201744)
0201728	MPS-IH GY	Insulating sleeve (gray), for MPS metal part to be ordered separately (0201744)
0201676	MPS-IH RD	Insulating sleeve (red), for MPS metal part to be ordered separately (0201744)
0201715	MPS-IH VT	Insulating sleeve (violet), for MPS metal part to be ordered separately (0201744)
0201663	MPS-IH WH	Insulating sleeve (white), for MPS metal part to be ordered separately (0201744)
0201692	MPS-IH YE	Insulating sleeve (yellow), for MPS metal part to be ordered separately (0201744)
0201744	MPS-MT	Test plug, consisting of: Metal part for 2.3 mm diameter socket hole
3036709	PS-4/E	Individual test plug, for ST and QT terminal blocks, can be labeled with ZBFM 4

Tools

1206612	SZF 3-1,0X5,5	Screwdriver, blade: 1.0 x 5.5 x 100 mm, length 180 mm
---------	---------------	---